

Diocesi di **COMO**
XI SINODO

TESTIMONI E ANNUNCIATORI
DELLA MISERICORDIA DI DIO



**MISERICORDIA
e FAMIGLIA**



Alla luce della PAROLA



MISERICORDIA*FAMIGLIA



PAROLE*CHIAVE



BUONA NOTIZIA
per il mondo



**ESERCIZIO della
MISERICORDIA**



LINGUAGGIO

MODELLO



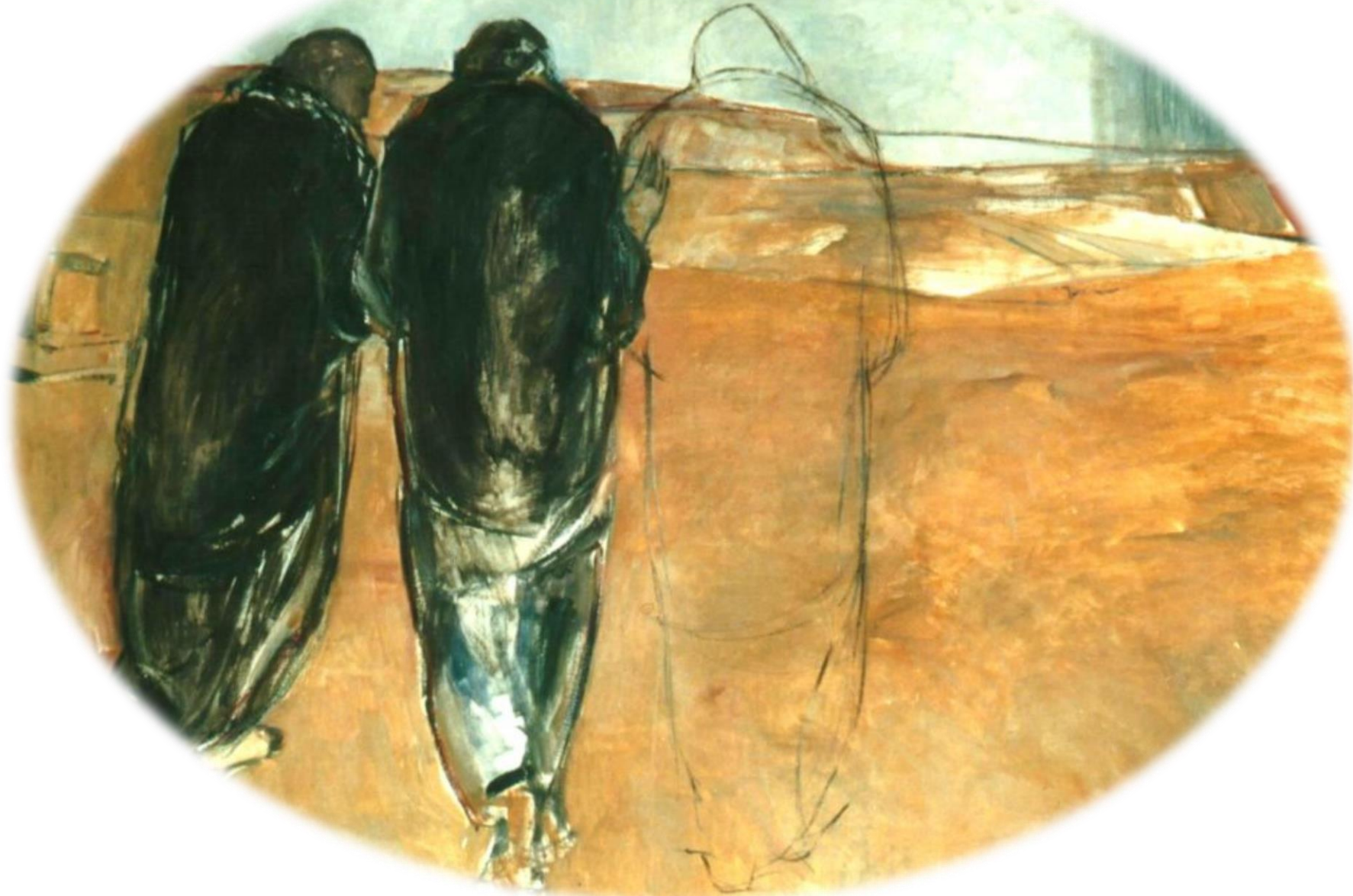
LUOGO e SOGGETTO



BISOGNO



ACCOMPAGNARE



A romantic scene featuring the silhouettes of a man and a woman in a field at sunset. The man is on the left, leaning towards the woman on the right, and they are kissing. The background is a bright, golden sky with scattered clouds, and the foreground shows the dark silhouette of tall grass. The overall mood is intimate and tender.

MATERNITÁ

A photograph of a forest path. The path is made of dirt and fallen leaves, leading into a dense forest. Tall, thin trees line the path, and sunlight filters through the canopy, creating a bright, hazy atmosphere. The sun is visible in the upper left, casting long shadows on the path. The overall scene is peaceful and natural.

DARE
RICEVERE
USCIRE